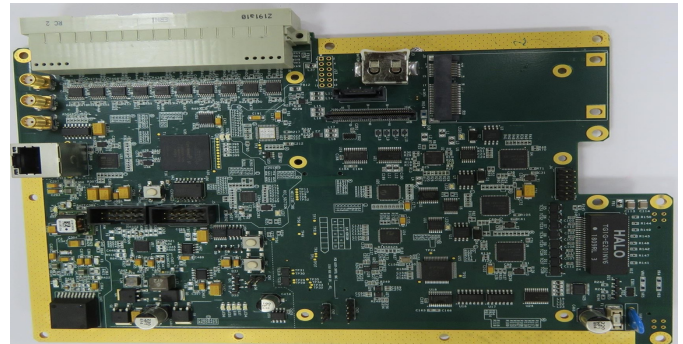




## SBC and FPGA BOARD - ICS-CZ03FDE

### DESCRIPTION:

ICS-CZ03FDE is an Altera Cyclone V series FPGA based card facilitated with various features and can be operated up maximum frequency of 800 MHz. Cyclone® V FPGA are featured with Integrated ARM\* Cortex\*-A9 MPCore\* Processor System optimized for lowest cost and power for 614 Mbps to 3.125 Gbps transceiver applications. CZ03FDE has on board 10/100 Ethernet Interface along with other peripherals like RS422, HDMI. The CZ03FDE can be interfaces to standard 7th Generation Intel core Processor board with CM238/QM175/HM175 chipsets



### FEATURES:

- Intel® Xeon® E3 and 7th gen Intel® Core™ i7/i5/i3 processors (Kaby Lake-H)
- 2 DDR4-2133 SO-DIMM slots, up to 32GB ECC or non-ECC
- 1 PCIe x16 and 8 PCIe x1 Gen. 3
- 4 SATA-600 with RAID 0/1/5/10
- 4 USB 3.0 and 8 USB 2.0
- Intel / Altera FPGA with 25K LE
- Maximum Operating Frequency of 800 MHz
- Serial EEPROM
- 10/100/1000 Ethernet Transceiver
- RS422 Line Receiver
- Supports HDMI 1.4 Data Rate
- Operating Temperature -40°C ~ +85°C

### SPECIFICATIONS:

- Processor : Intel® Xeon® E3 and 7th gen Intel Core™ i7/i5/i3
- Chipset : Intel® CM238/QM175/HM175
- System Memory : 2 x DDR4-2133 SO-DIMM, up to 32GB
- Display : 1 x LVDS;18/24-bit single/dual channel; 1 x VGA up to 1920 x 1200 @60Hz (default); 2 x DDI (DP/HDMI/DVI)
- Storage : 4 x SATA-600 with RAID 0/1/5/10
- Expansion : 1 x PCIe x16 Gen 3.0; 8 x PCIe x1 Gen 3.0
- Power Input : ATX: +12V, +5VSB; AT: +12V
- Processor : Altera Cyclone V Series FPGA
- OS : RHEL 7.1(Server with GUI)
- Clock Source : On board 25 & 33.3MHz
- Bus Interfaces : SATA
- Ethernet : 10/100/1000 base-T interface
- VGA : Up to 1920 x 1200 @60Hz (default)
- USB PORT : USB 2.0– 2 Nos; USB 3.0– 1 No
- HDMI : Supports HDMI 1.4

### INNOVATION COMMUNICATIONS SYSTEM LTD,

Survey No: 185, Door No: 1-55/11/KJ, Kalajyothi Bldg, Ground Floor, Masjid Banda, Kondapur, RR Dist  
Hyderabad – 500 084 , Contact: 040-6785 5555